



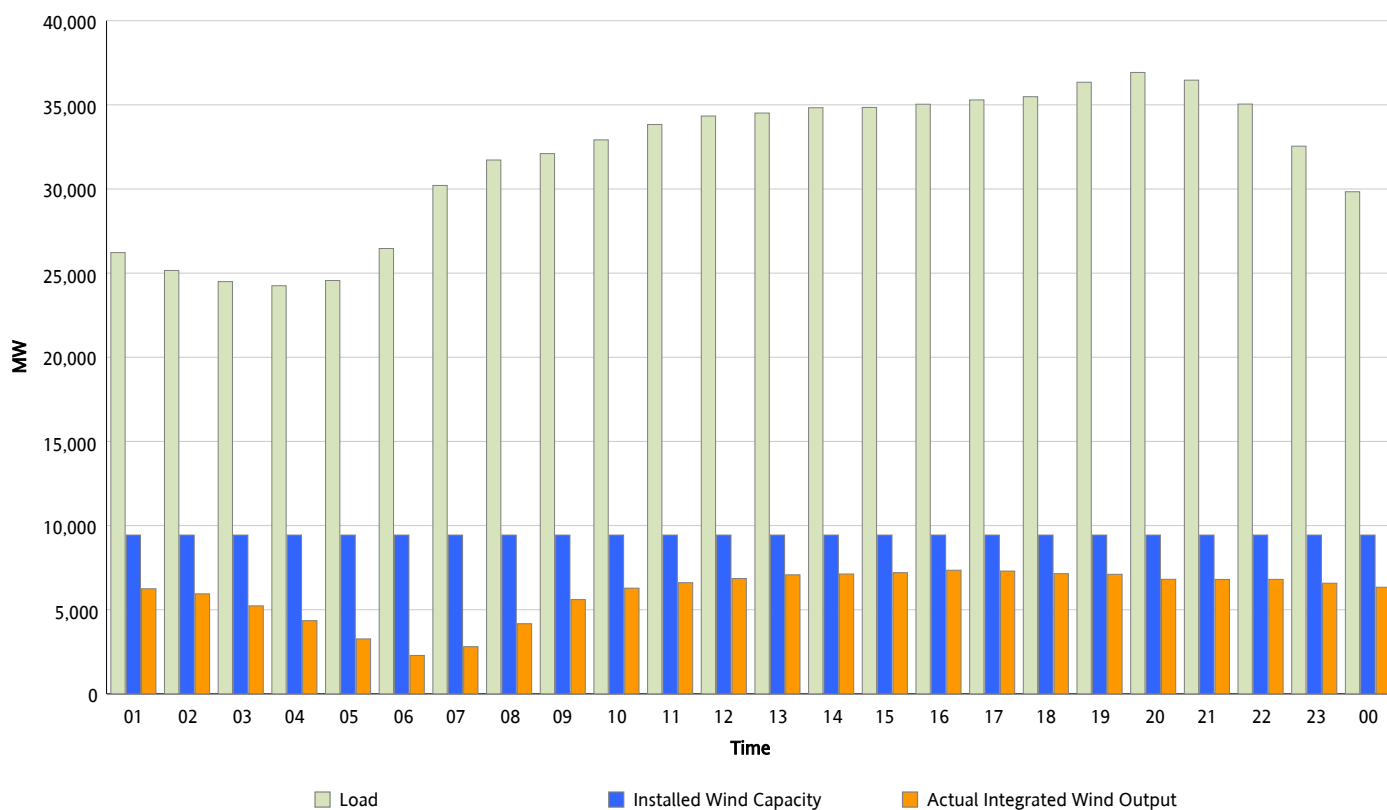
ERCOT Grid Operations

Wind Integration Report : 03/08/2012

Peak Load	36,924 MW
Load Peak Hour (HE)	20
Wind Over Peak	6,807 MW
Wind Record 03/07/12	7,599 MW
Max Wind Value*	7,559 MW
Wind Peak Time	15:50
Wind Integration %	21.53 %

Hourly Average Actual Load vs. Actual Wind Output

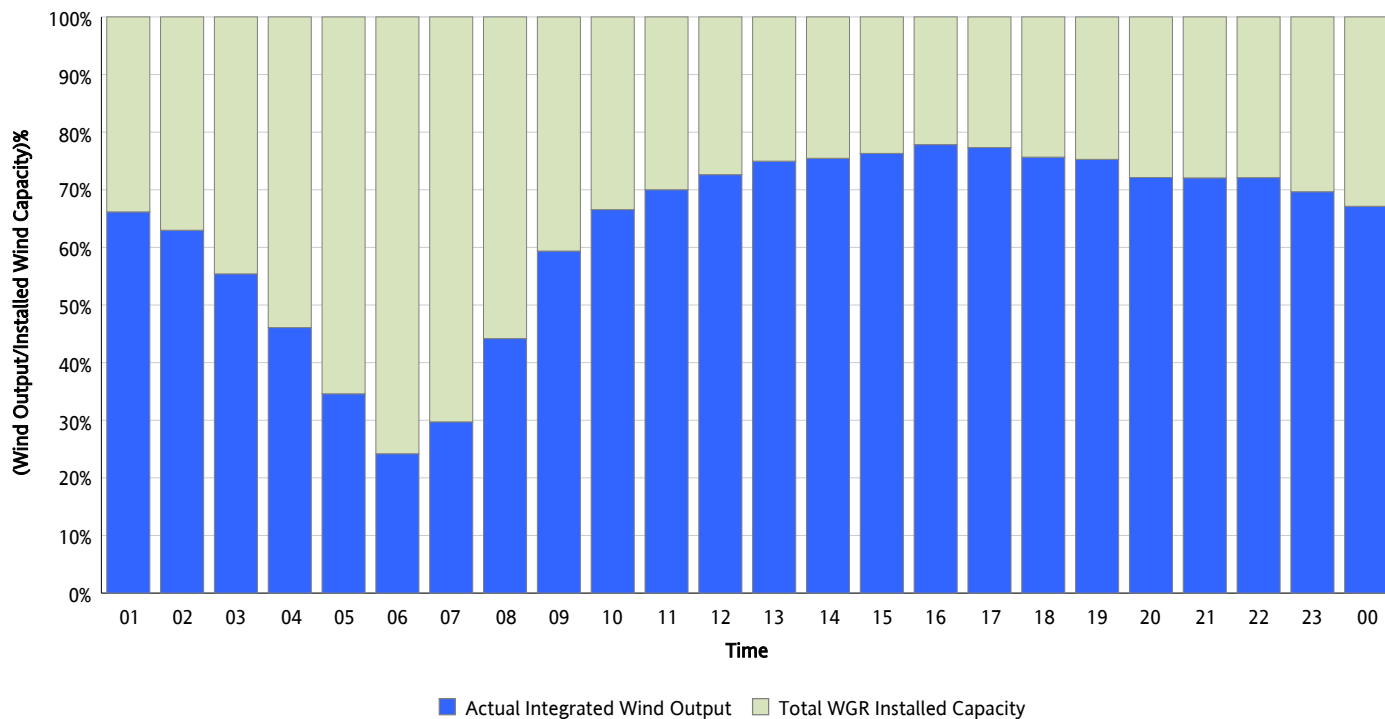
03/08/2012



* Wind Record and Wind Max represent instantaneous values and the rest of the values are integrated over the hour

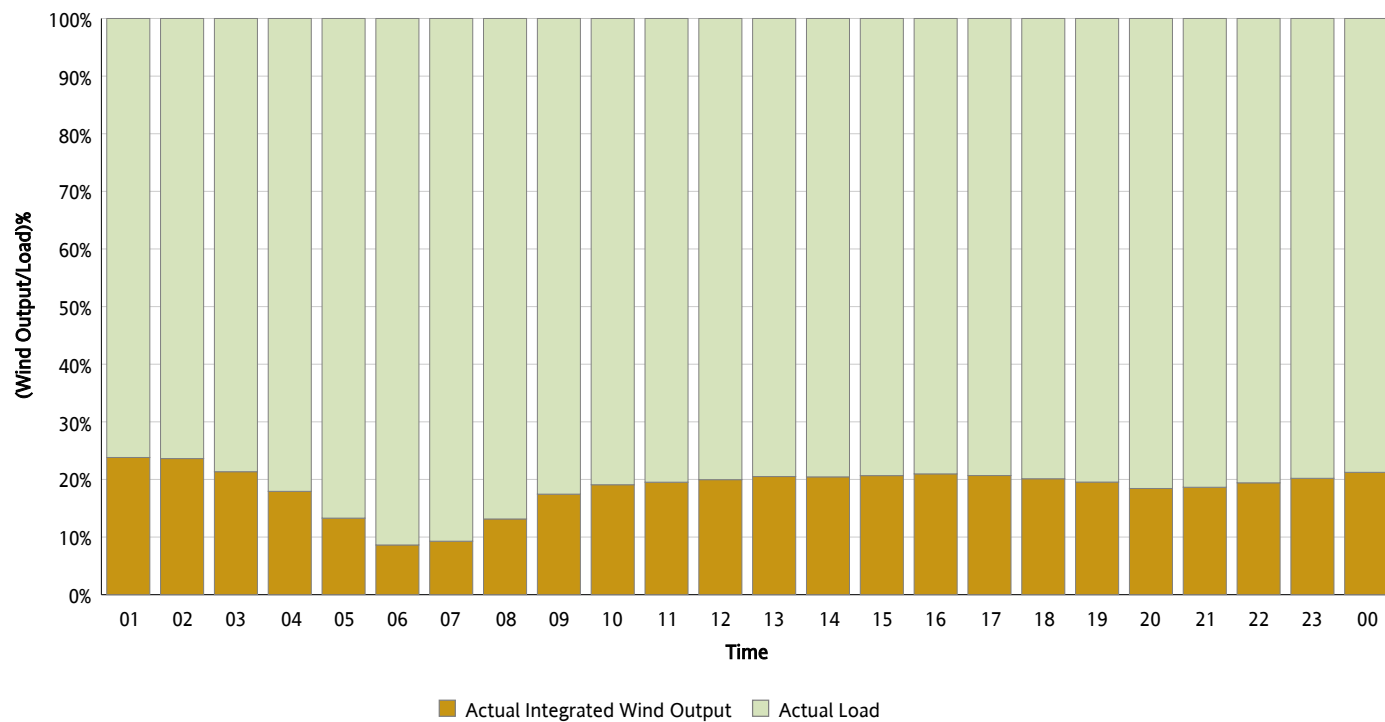
Actual Wind Output as a Percentage of the Total Installed Wind Capacity

03/08/2012



Actual Wind Output as a Percentage of the ERCOT Load

03/08/2012



ERCOT Load vs. Actual Wind Output

03/01/2012 - 03/08/2012

